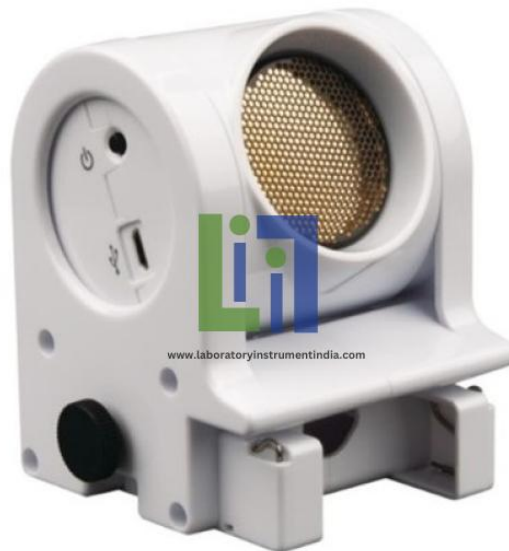




Email : sales@laboratoryinstrumentindia.com

**Product Name :**  
Motion Sensor

**Product Code :**  
LBNY-0004-780052



**Description :**

Motion Sensor

**Technical Specification :**

Motion Sensor:

The Wireless Motion Sensor uses ultrasound to measure the position, velocity, and acceleration of objects, ranging from 15 cm to 4.0 m away. With both Bluetooth and USB connectivity, this easy-to-use sensor enables students to take turns measuring their distance, while the class observes their motion materializing as a graph in real time. And, without cables to get in the way, students can extend their studies with handheld and ceiling-mounted applications!

Uses TTL compatible signals

Mountable on a support, rod

Plug connectors to the interface

Measurement range from 0.15 meters to 8 meters

Rotational sensitive head 360 degrees

Resistant to false targets.

Mounted on a track system.

---

# Laboratory Instrument India

